



Return of packaging

March 2025

Return of packaging

Quality products require quality packaging. Therefore, we supply our products in re-usable stable packaging made of wood. Since the publication of the European Parliament and Council Directive 94/62/EC on packaging and packaging waste in 1994, we offer you the service of free collection of our wooden packaging by our forwarding agents. Last year alone, Wieland has saved a forest area the size of 25 football fields – an impressive result which was achieved thanks to 20 years of experience in cooperation with our customers.

Please arrange for a pick-up using your myWieland account. Alternatively, contact your customer service representative for assistance.

In the following, you can see a number of examples of how we would like to ask you to return our packaging.

For load-securing and occupational safety reasons we must ask you to observe the following delivery instructions:

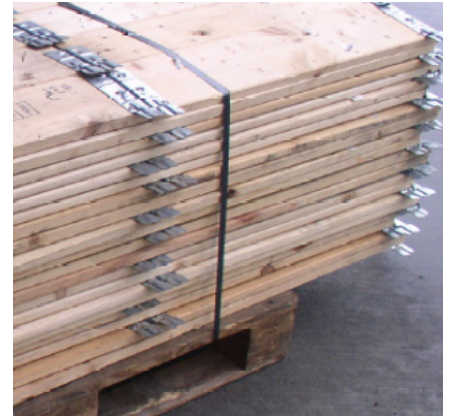
- Round and square pallets, cradles, covers, frames and drums must be stacked separately and tied down with steel or plastic straps.
- Crates must be stacked, max. 1.20 m wide, 1 m high, and they must be tied down with steel or plastic straps. A squared timber and/or squared timber with an anti-slip mat must be placed under each stack of crates.
- Stacking height max. 1.75 m

Help us protect the environment and use the free service of Wieland. We thank you very much for your cooperation in terms of safety and environmental awareness.

For further information please contact our sales personnel.



Cover



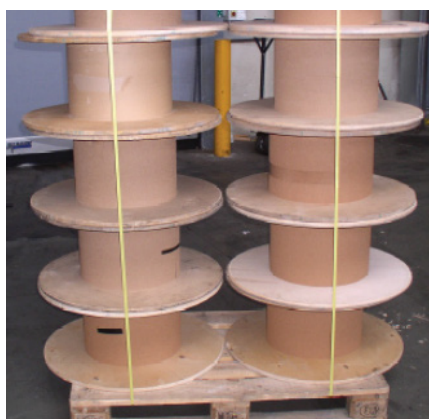
Frame



Pallets (to be stacked in an overlapping way)



Cradles



Drums



Crates

wieland

Wieland-Werke AG | Graf-Arco-Straße 36 | 89079 Ulm | Germany
info@wieland.com | wieland.com

