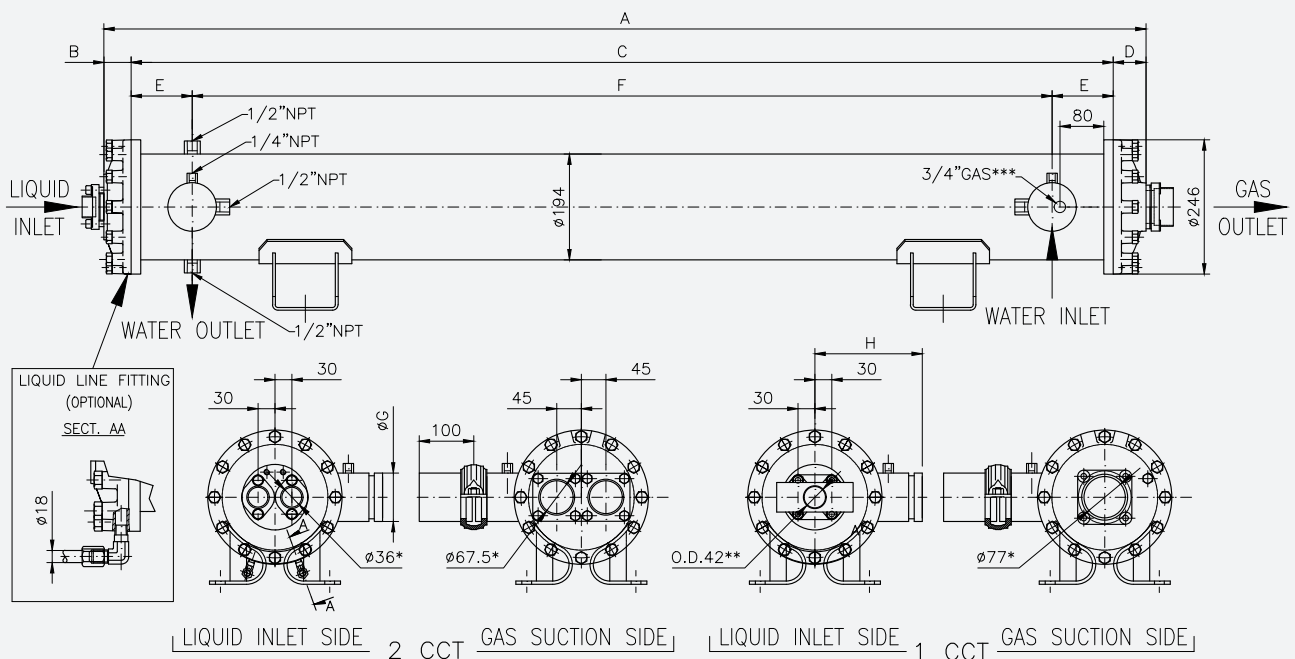


Length [mm]	Number of ranks	Weight [kg]	Water [dm <sup>3</sup> ]	Gas [dm <sup>3</sup> ]	A [mm]	B [mm]	C [mm]	D [mm]	E [mm]	F [mm]	G [mm]	Ø H [mm]	N° CCT
1800	33	103	42	7	1910	50	1800	60	105	1590	76,1	197	1CC/2CCT
	44	106	40	9									
	55	110	37	11									
	66	112	35	13									
2175	33	113	51	8	2285	50	2175	60	125	1925	88,9	197	1CC/2CCT
	44	117	48	10									
	55	121	45	13									
	66	124	43	15									
2750	33	133	64	10	2860	50	2750	60	125	2500	88,9	197	1CC/2CCT
	44	138	61	13									
	55	143	57	16									
	66	146	54	19									
3300	33	148	77	12	3410	50	3300	60	125	3050	88,9	197	1CC/2CCT
	44	154	73	15									
	55	160	69	19									
	66	164	65	22									
3600	33	156	84	13	3710	50	3600	60	125	3350	88,9	197	1CC/2CCT
	44	162	80	16									
	55	169	75	20									
	66	173	71	24									
3900	33	163	91	14	4010	50	3900	60	125	3650	88,9	197	1CC/2CCT
	44	170	86	18									
	55	177	81	22									
	66	182	77	26									

\* Please contact technical dept. at WIELAND PROVIDES S.r.l. for more info



- \* INTERNAL DIAMETER OF FERRULE
- \*\* MANIFOLD (MONO SERIES ONLY)
- \*\*\* HEAT RESISTANCE-ON THE OTHER SIDE