



GEWA-B EVAPORATOR TUBES

APPLICATIONS

GEWA-B tubes are enhanced nucleate boiling tubes for shell-and-tube heat exchangers. They are optimised for flooded and falling film evaporators in packaged chillers, both for the air-conditioning and refrigeration industry.

BENEFITS

- Increased heat transfer on the shell and tube side
- Advanced overall heat transfer performance
- Substantial reduction of heat exchanger size and refrigerant charge
- Significant improvement in life cycle energy efficiency

PRODUCT TYPES

Tailor-made for specific applications

- B5 & B6 For highest performance and efficiency
- B4HSL Weight optimized, drop-in applications
- BHV For media with high viscosities
- BLF/ BPL For high fouling applications

Available in a wide range of materials:



Copper | Copper Nickel | Carbon Steel | Stainless Steel | Titanium

FABRICATION AND CERTIFICATION

- DIN EN 12452 / EN 10216-2
- DIN 17679 and VdTÜV 420/5 (for use in pressure vessels)
- ASTM B 359/ASME SB-359/ASTM A-498

Certification for use in pressure vessels has been obtained with AD-Merkblatt W0/TRD 100.

Certificates 3.1 / 3.2 according to DIN EN 10204

ThermalS | DESIGN SOFTWARE

Wieland Thermal Solutions provides thermal design software to optimise your enhanced heat exchangers.

More information on our ThermalS online platform on www.wieland-thermalsolutions.com/ThermalS.

GEWA-B EVAPORATOR TUBES

RANGE OF AVAILABLE DIMENSIONS

Tube	Material	Plain End		Finned Section				Approximate Weight ¹⁾
		d ₁	s ₁	d ₄	d ₅	s ₂	d ₂	G
		(mm)	(mm)	(mm)	(mm)	(mm)	(mm)	(kg/m)
GEWA-B6H 3/4" x 0.63	K21	19.00	1.13	18.85	17.96	0.63	16.70	0.495
GEWA-B6H 3/4" x 0.71	K21	19.00	1.20	18.85	17.97	0.71	16.55	0.526
GEWA-B6H 1" x 0.63	K21	25.45	1.13	25.30	24.15	0.63	22.89	0.662
GEWA-B6H 1" x 0.71	K21	25.45	1.24	25.30	24.15	0.71	22.73	0.718
GEWA-B5H 3/4" x 0.63	K21	19.00	1.16	18.85	17.75	0.63	16.49	0.505
GEWA-B5H 3/4" x 0.71	K21	19.00	1.24	18.85	17.75	0.71	16.33	0.545
GEWA-B5H 3/4" x 0.89	K21	19.00	1.45	18.85	17.75	0.89	15.97	0.623
GEWA-B5H 1" x 0.63	K21	25.45	1.20	25.30	24.20	0.63	22.94	0.702
GEWA-B5H 1" x 0.71	K21	25.45	1.27	25.30	24.20	0.71	22.78	0.752
GEWA-B5LSL 3/4" x 0.63 ²⁾	K21	19.00	1.13	18.85	17.85	0.63	16.59	0.477
GEWA-B5LSL 1" x 0.63 ²⁾	K21	25.45	1.13	25.25	24.25	0.63	22.99	0.662
GEWA-B5LSL 1" x 0.71 ²⁾	K21	25.45	1.24	25.25	24.25	0.71	22.83	0.713
GEWA-B5L 3/4" x 0.71 ²⁾	K21	19.00	1.24	18.85	17.75	0.71	16.33	0.545
GEWA-B4HSL 3/4" x 0.63	K21	19.00	1.12	18.85	17.85	0.63	16.59	0.483
GEWA-B4HSL 3/4" x 0.71	K21	19.00	1.20	18.85	17.85	0.71	16.43	0.526
GEWA-B4HSL 3/4" x 0.89	K21	19.00	1.45	18.85	17.75	0.89	15.97	0.623
GEWA-B4HSL 1" x 0.55	K21	25.45	1.13	25.25	24.05	0.55	22.86	0.665
GEWA-B4HSL 1" x 0.63	K21	25.45	1.13	25.25	24.25	0.63	22.99	0.679
GEWA-B4HSL 1" x 0.71	K21	25.45	1.20	25.25	24.25	0.71	22.83	0.717
GEWA-B4HSL 1" x 0.89	K21	25.45	1.45	25.25	24.05	0.89	22.27	0.865
GEWA-B4HSL 1/2" x 0.55	K21	12.70	1.05	12.55	11.55	0.55	10.45	0.303
GEWA-B4L 3/4" x 0.63 ²⁾	K21	19.00	1.12	18.85	17.85	0.63	16.59	0.500
GEWA-B4L 3/4" x 0.71 ²⁾	K21	19.00	1.20	18.85	17.85	0.71	16.43	0.535
GEWA-BLF 3/4" x 0.80	K21	19.00	1.45	18.85	17.45	0.80	15.85	0.649
GEWA-BLF 3/4" x 0.90	L10	19.00	1.55	18.85	17.45	0.90	15.65	0.673
GEWA-BLF 3/4" x 0.90	CS	19.00	1.55	18.85	17.45	0.90	15.65	0.590
GEWA-BLF 3/4" x 1.00	CS	19.00	1.75	18.80	17.40	1.00	15.40	0.632
GEWA-BHV 3/4" x 0.80	K21	19.00	1.45	18.85	17.55	0.80	15.95	0.636
GEWA-BHV 1" x 0.71	K21	25.45	1.20	25.25	24.35	0.71	22.93	0.746
GEWA-BPL 3/4" x 0.90	L10	19.00	1.40	18.85	17.45	0.90	15.65	0.650

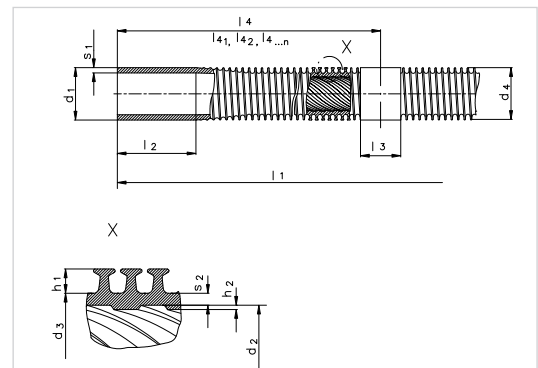
1) weight for tubes without unfinned intermediate parts

2) L = version for low pressure refrigerants

Tube Material		
Wieland Code	ISO Code	UNS Code/ ASTM-Code
K21	Cu-DHP	C12200
L10	CuNi10Fe1Mn	C70600
CS	P235GH	A179

Other materials on request

Length Tolerances	
l ₁	Length Tolerances
< 2000	+ 2 mm
2000–8000	+ 1 %



For further information please contact

Wieland-Werke AG | Thermal Solutions

Andreas Knoepfler

Phone: +49 731 944 2892

Email: andreas.knoepfler@wieland.com

WIELAND-THERMALSOLUTIONS.COM