

wieland

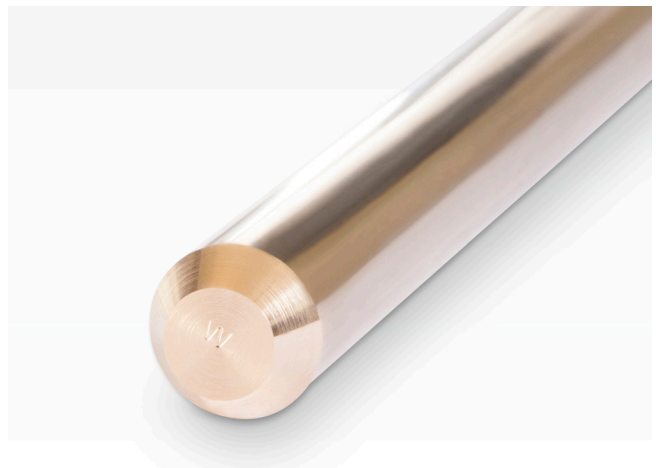
Extruded Products

Stock Program Vöhringen



Dimension	Weight	Packaging	Material No.	Condition	Tolerance (class)	End Finish
mm	kg/m					
Wieland-Z33, CuZn39Pb3, EN 12164						
Precision Rod W5000, 3,000 ± 30 mm						
2.0	0.027	x	441302000	R500	h8	chamfered/pointed
2.5	0.042	x	441302500			
3.0	0.060	x	441303000			
3.5	0.082	x	441303500			
4.0	0.107	x	441304000			
4.5	0.135	x	441304500			
5.0	0.167	x	441305000			
5.5	0.202	●	441305500			
6.0	0.240	●	441306000			
6.5	0.282	●	441306500			
7.0	0.327	●	441307000			
7.5	0.376	●	441307500			
8.0	0.427	●	441508000			
8.5	0.482	●	441508500			
9.0	0.541	●	441509000			
9.5	0.603	●	441509500			
10.0	0.668	○	441510000			
10.5	0.737	○	441510500			
11.0	0.808	○	441511000			
11.5	0.888	○	441511500			
12.0	0.961	○	441512000			
12.5	1.040	○	441512500			
13.0	1.128	○	441513000			
13.5	1.220	○	441513500			
14.0	1.308	○	441514000			
14.5	1.400	○	441514500			
15.0	1.502	○	441515000			
16.0	1.710	○	441516000			
17.0	1.929	○	441517000			
18.0	2.163	○	441518000			
19.0	2.410	○	441519000			
20.0	2.670	○	441520000			
21.0	2.944	○	441521000			
22.0	3.231	○	441522000			
23.0	3.552	○	441523000			
24.0	3.844	○	441524000			
25.0	4.160	○	441525000			
26.0	4.512	○	441526000			
27.0	4.880	○	441527000			
28.0	5.232	○	441528000			
29.0	5.600	○	441529000			
30.0	6.008	○	441530000			

Dimension	Weight	Packaging	Material No.	Condition	Tolerance (class)	End Finish		
mm	kg/m							
Wieland-Z33, CuZn39Pb3, EN 12164								
Precision Rod W5000, 3,000 ± 30 mm								
31.0	6.432	○	441531000	R360	h9	chamfered/pointed		
32.0	6.840	○	441532000					
33.0	7.276	○	441533000					
34.0	7.716	○	441534000					
35.0	8.188	○	441535000					
36.0	8.652	○	441536000					
37.0	9.152	○	441537000					
38.0	9.640	○	441538000		h10	chamfered/pointed		
40.0	10.688	○	442140000					
42.0	11.780	○	442142000					
45.0	13.520	○	442145000					
46.0	14.130	○	442146000					
48.0	15.380	○	442148000					
50.0	16.690	○	442150000					
52.0	18.050	○	442152000					
55.0	20.190	○	442155000					
56.0	20.940	○	442156000					
58.0	22.460	○	442158000	h11	both ends chamfered			
60.0	24.030	○	442160000					
65.0	28.210	○	442165000					
70.0	32.710	○	442170000					
75.0	37.552	○	442175000					
80.0	42.726	○	442180000					
80.0	42.726	○	442180000			R360	h11	sawm/ sawn
80.0	42.726	○	442180000					





Round Rod extruded

Round Rod drawn

Dimension mm	Weight kg/m	Packaging	Material No.	Condition	Tolerance	Length	End Finish
					mm	mm	
Wieland-Z33, CuZn39Pb3, EN 12164							
85.0	48.23	o	442808500	extruded	±1.2	approx. 2,000–3,000	both ends sawn
90.0	54.08	o	442809000				
95.0	60.25	o	442809500				
100.0	66.76	o	442810000				
105.0	73.56	o	442810500				
110.0	80.74	o	442811000				
115.0	88.24	o	442811500				
120.0	96.08	o	442812000				
125.0	104.25	o	442812500				
130.0	112.77	□	442813000				
140.0	130.78	□	442814000	extruded	±1.5	approx. 600–1,500	both ends sawn
150.0	150.13	□	442815000				
160.0	170.82	□	442816000				
170.0	192.84	□	442917000				
180.0	216.90	□	442918000				
200.0	266.90	□	442920000				
210.0	294.26	□	442921000				
225.0	337.80	□	442922500				
250.0	417.03	□	442925000				

Dimension mm	Weight kg/m	Packaging	Material No.	Condition	Tolerance	End Finish
					(class)	
Wieland-Z21, CuZn38Pb2, EN 12164 3,000 ± 30 mm						
2.5	0.041	x	443302500	R410	B	chamfered/pointed
3.0	0.059	x	443303000			
3.5	0.081	x	443303500			
4.0	0.106	x	443304000			
4.5	0.134	x	443304500			
5.0	0.165	x	443305000			
5.5	0.200	●	443305500			
6.0	0.238	●	443306000			
7.0	0.323	●	443307000			
7.5	0.371	●	443307500			
8.0	0.422	●	443308000			
8.5	0.477	●	443308500			
9.0	0.534	●	443309000			
10.0	0.660	●	443310000			
11.0	0.798	o	443311000			
12.0	0.950	o	443312000			
13.0	1.115	o	443313000			
14.0	1.293	o	443314000			
15.0	1.484	o	443315000			
16.0	1.689	o	443316000			
17.0	1.907	o	443317000			
18.0	2.138	o	443318000			
20.0	2.639	o	443320000			
22.0	3.193	o	443322000			

Standard Packaging:

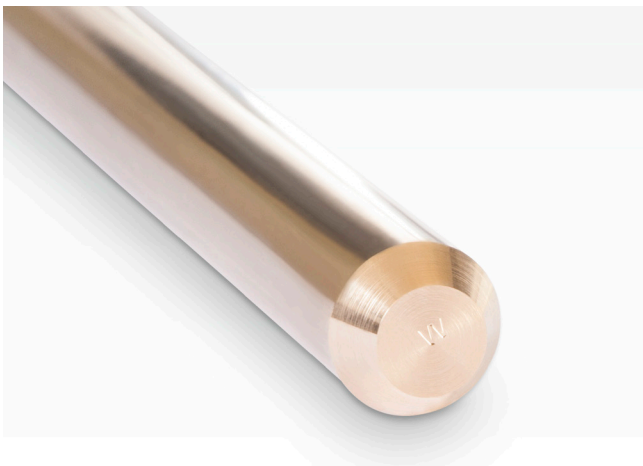
- x = wooden boxes of approx. 250 kg
- = wooden boxes of approx. 500 kg,
 - ≤ 5,5 mm in small bundles of 25 kg
- o = bundles of approx. 500 kg,
 - alternatively bundles of approx. 1,000 kg are possible
- = wooden pallet up to 1,500 kg





Round Rod drawn

Dimension	Weight	Packaging	Material No.	Condition	Tolerance	End Finish
Wieland-Z41, CuZn40Pb2, CW617N, EN 12164 Precision Rod W5000, 3,000 ± 30 mm						
14.0	1.295	o	443914000	R500	+0/-0.027	chamfered/pointed
15.0	1.486	o	443915000	R430		
17.0	1.909	o	443917000			
18.0	2.140	o	443918000			
19.0	2.384	o	443919000			
20.0	2.642	o	443920000		+0/-0.033	
22.0	3.197	o	443922000			
23.0	3.494	o	443923000			
24.0	3.805	o	443924000			
25.0	4.128	o	443925000	+0/-0.062		
26.0	4.465	o	443926000			
27.0	4.809	o	443927000			
28.0	5.178	o	443928000			
30.0	5.938	o	443930000		+0/-0.10	
32.0	6.764	o	443932000			
33.0	7.193	o	443933000			
36.0	8.550	o	443936000			
38.0	9.538	o	443938000	+0/-0.16		both ends chamfered
40.0	10.568	o	443940000			
42.0	11.638	o	443942000			
48.0	15.218	o	443948000			
50.0	16.513	o	443950000			



Round Rod drawn

Dimension	Weight	Packaging	Material No.	Condition	Tolerance (class)	End Finish
Wieland-N31, CuNi7Zn39Pb3Mn2, EN 12164 3,000 ± 30 mm						
8.0	0.418	●	446508000	R600	B	chamfered/pointed
10.0	0.655	●	446510000			
12.0	0.942	o	446512000			
14.0	1.282	o	446514000			
16.0	1.676	o	446516000			
20.0	2.617	o	446520000			

Standard Packaging:

x = wooden boxes of approx. 250 kg

● = wooden boxes of approx. 500 kg

o = bundles of approx. 500 kg



Rectangular Rod drawn

Dimension		Weight	Packaging	Material No.	Condition	Tolerance (class)	Length	End Finish
mm	mm	kg/m					mm	
Wieland-Z33, CuZn39Pb3, EN 12167								
10 x 6	0.510	●	453110600	M	C	ca. 3,000	both ends sawn	
12 x 3	0.306	●	453112300					
12 x 5	0.510	●	453112500					
12 x 8	0.816	●	453112800					
15 x 3	0.382	●	453115300					
15 x 5	0.637	●	453115500					
15 x 8	1.020	●	453115800					
15 x 10	1.275	○	453116000					
20 x 3	0.510	●	453120300					
20 x 4	0.680	●	453120400					
20 x 5	0.850	●	453120500					
20 x 6	1.020	●	453120600					
20 x 8	1.360	●	453120800					
20 x 10	1.700	○	453121000					
20 x 12	2.040	○	453121200					
20 x 15	2.550	○	453121500					
25 x 3	0.637	●	453125300					
25 x 5	1.062	●	453125500					
25 x 8	1.700	●	453125800					
25 x 10	2.125	○	453126000					
25 x 12	2.550	○	453126200					
25 x 15	3.188	○	453126500					
25 x 20	4.250	○	453127000					
30 x 10	2.550	○	453131000					
30 x 15	3.825	○	453131500					
30 x 20	5.100	○	453132000					
35 x 20	5.950	○	453137000					

Dimension		Weight	Packaging	Material No.	Condition	Tolerance (class)	Length	End Finish
mm	mm	kg/m					mm	
Wieland-Z33, CuZn39Pb3, EN 12167								
40 x 10	3.400	○	453141000	M	C	ca. 3,000	both ends sawn	
40 x 12	4.080	○	453141200					
40 x 15	5.100	○	453141500					
40 x 20	6.800	○	453142000					
40 x 25	8.500	○	453142500					
40 x 30	10.200	○	453143000					
50 x 6	2.550	●	453150600					
50 x 10	4.250	○	453151000					
50 x 15	6.375	○	453151500					
50 x 20	8.500	○	453152000					
50 x 25	10.625	○	453152500					
50 x 30	12.750	○	453153000					
60 x 10	5.100	○	453161000					
60 x 20	10.200	○	453162000					
60 x 30	15.300	○	453163000					
60 x 40	20.400	○	453164000					
70 x 10	5.950	○	453171000					
80 x 10	6.800	○	453181000					
80 x 20	13.600	○	453182000					
100 x 10	8.500	○	453191000					

Standard Packaging:

● = wooden boxes of approx. 500 kg

○ = bundles of approx. 500 kg



Hexagonal Rod drawn

Dimension	Weight	Packaging	Material No.	Condition	Tolerance	Length	End Finish
Wieland-Z33, CuZn39Pb3, EN 12164							
Precision Rod W5006, 3,000 mm							
4.0	0.118	x	451104000	R500	+0/-0.08	± 30	chamfered/pointed
4.5	0.149	x	451104500				
5.0	0.184	x	451105000				
5.5	0.223	●	451105500				
6.0	0.265	●	451106000				
7.0	0.361	●	451107000				
8.0	0.471	●	451108000				
9.0	0.596	●	451109000				
10.0	0.736	●	451110000				
11.0	0.892	○	451111000				
12.0	1.060	○	451112000				
13.0	1.244	○	451113000				
14.0	1.444	○	451114000				
15.0	1.656	○	451115000				
16.0	1.884	○	451116000				
17.0	2.128	○	451417000				
18.0	2.384	○	451418000				
19.0	2.656	○	451419000				
20.0	2.944	○	451420000				
21.0	3.256	○	451421000				
22.0	3.563	○	451422000				
24.0	4.240	○	451424000				
25.0	4.600	○	451425000				
27.0	5.370	○	451427000				
30.0	6.624	○	451430000				
32.0	7.540	○	451432000	M	+0/-0.16	± 100	both ends sawn
36.0	9.540	○	451236000				

Standard Packaging:

- x = wooden boxes of approx. 250 kg
- = wooden boxes of approx. 500 kg,
 - < 6 mm in small bundles of 25 kg
- = bundles of approx. 500 kg,
 - alternatively bundles of approx. 1,000 kg are possible



W

Lead-free machining materials

Dimension	Weight	Packaging	Material No.	Condition	Tolerance	Length	End Finish
eco SW1®, CuZn21Si3P, CW724R, EN 12164/C69300 Round rod, 3,000 mm							
7.0	0.317	●	479207000	R670	+0/-0.036	± 50	chamfered/pointed
8.0	0.415	●	479208000				
9.0	0.525	●	479209000				
10.0	0.648	○	479210000				
11.0	0.784	○	479211000				
12.0	0.933	○	479212000				
13.0	1.095	○	479213000				
14.0	1.270	○	479214000				
15.0	1.458	○	479215000				
16.0	1.659	○	479216000				
17.0	1.873	○	479217000	R600	+0/-0.043	± 50	chamfered/pointed
18.0	2.099	○	479218000				
19.0	2.339	○	479219000				
20.0	2.592	○	479220000				
22.0	3.136	○	479222000				
23.0	3.428	○	479223000				
24.0	3.732	○	479224000				
25.0	4.050	○	479225000				
27.0	4.724	○	479227000				
28.0	5.080	○	479228000				
30.0	5.832	○	479230000	R500	+0/-0.052	± 100	both ends chamfered
32.0	6.635	○	479232000				
35.0	7.937	○	479235000				
38.0	9.356	○	479238000				
40.0	10.367	○	479240000				
42.0	11.430	○	479242000				
45.0	13.114	○	479245000				
48.0	14.929	○	479248000				
50.0	16.199	○	479250000				

Dimension	Weight	Packaging	Material No.	Condition	Tolerance	Length	End Finish
ecobrass SW4®, CuZn21Si3P, CW724R, EN 12164/C69305 Round rod, 3,000 mm							
10.0	0.649	●	479610000	R500	+0/-0.036	± 50	chamfered/pointed
11.0	0.785	●	479611000				
12.0	0.934	●	479612000				
13.0	1.096	○	479613000				
14.0	1.272	○	479614000				
15.0	1.460	○	479615000				
16.0	1.661	○	479616000				
17.0	1.875	○	479617000				
18.0	2.102	○	479618000				
19.0	2.342	○	479619000				
20.0	2.595	○	479620000	R500	+0/-0.043	± 50	chamfered/pointed
21.0	2.861	○	479621000				
22.0	3.136	○	479622000				
23.0	3.432	○	479623000				
24.0	3.737	○	479624000				
25.0	4.055	○	479625000				
26.0	4.385	○	479626000				
27.0	4.729	○	479627000				
28.0	5.086	○	479628000				
30.0	5.832	○	479630000				
32.0	6.643	○	479632000	R500	+0/-0.052	± 100	both ends chamfered
33.0	7.065	○	479633000				
34.0	7.490	○	479634000				
35.0	7.947	○	479635000				
38.0	9.356	○	479638000				
40.0	10.367	○	479640000				
45.0	13.121	○	479645000				
48.0	14.929	○	479648000				
50.0	16.199	○	479650000				

Standard Packaging:

- = wooden boxes of approx. 500 kg,
≤ 5,5 mm in small bundles of 25 kg
- = bundles of approx. 500 kg,
alternatively bundles of approx. 1,000 kg are possible

Dimension	Weight	Packaging	Material No.	Condition	Tolerance (class)	Length	End Finish
eco SZ3 [®] , CuZn40SiP							
Round rod, 3,000 mm							
3.0	0.060	x	444303000	W-R520	h9	± 50	chamfered/pointed
4.0	0.106	x	444304000				
5.0	0.166	x	444305000				
6.0	0.232	●	444306000				
7.0	0.316	●	444307000				
8.0	0.413	●	444308000				
9.0	0.522	●	444309000				
10.0	0.645	o	444310000				
11.0	0.780	o	444311000				
12.0	0.929	o	444312000				
13.0	1.090	o	444313000				
14.0	1.264	o	444314000				
15.0	1.451	o	444315000				
16.0	1.651	o	444316000				
17.0	1.864	o	444317000				
18.0	2.089	o	444318000				
19.0	2.328	o	444319000				
20.0	2.579	o	444320000				
22.0	3.121	o	444322000				
24.0	3.714	o	444324000				
25.0	4.030	o	444325000	W-R460	h11	± 100	both ends chamfered
26.0	4.359	o	444326000				
27.0	4.701	o	444327000				
28.0	5.055	o	444328000				
30.0	5.803	o	444330000				
32.0	6.603	o	444332000				
35.0	7.899	o	444335000				
40.0	10.317	o	444340000				
45.0	13.057	o	444345000				
50.0	16.120	o	444350000				
60.0	23.213	o	444360000				

Dimension	Weight	Packaging	Material No.	Condition	Tolerance (class)	Length	End Finish
eco SZ4 [®] , CuZn42, CW510L, EN12164							
Round rod, 3,000 mm							
4.0	0.103	x	444404000	R500	h9	± 50	chamfered/pointed
5.0	0.161	x	444405000				
6.0	0.232	●	444406000				
7.0	0.318	●	444407000				
8.0	0.412	●	444408000				
9.0	0.525	●	444409000				
10.0	0.644	o	444410000				
12.0	0.927	o	444412000				
14.0	1.262	o	444414000				
16.0	1.661	o	444416000				
18.0	2.102	o	444418000	R430	h9	± 50	chamfered/pointed
20.0	2.576	o	444420000				
25.0	4.055	o	444425000				
30.0	5.796	o	444430000				
35.0	7.947	o	444435000				
40.0	10.304	o	444440000				
45.0	13.042	o	444445000				
50.0	16.120	o	444450000				
60.0	23.213	o	444460000				
4.0	0.103	x	444404000				
5.0	0.161	x	444405000				
6.0	0.232	●	444406000				
7.0	0.318	●	444407000				
8.0	0.412	●	444408000				
9.0	0.525	●	444409000				
10.0	0.644	o	444410000				
12.0	0.927	o	444412000				
14.0	1.262	o	444414000				
16.0	1.661	o	444416000				

Standard Packaging:

x = wooden boxes of approx. 250 kg

● = wooden boxes of approx. 500 kg,

≤ 5,5 mm in small bundles of 25 kg

o = bundles of approx. 500 kg,

alternatively bundles of approx. 1,000 kg are possible



wieland

Wieland-Werke AG | Graf-Arco-Straße 36 | 89079 Ulm | Deutschland
info@wieland.com | wieland.com

Characteristics and properties of products / materials in this document are generic and provided solely for general information purposes. Any statement regarding the suitability of products / materials for certain types of applications is based on typical requirements and does not replace expert advice. Wieland disclaims all liability arising from any reliance on these documents.

04/2024 EX.ZZD.UJ.(MC.ED.UJ)